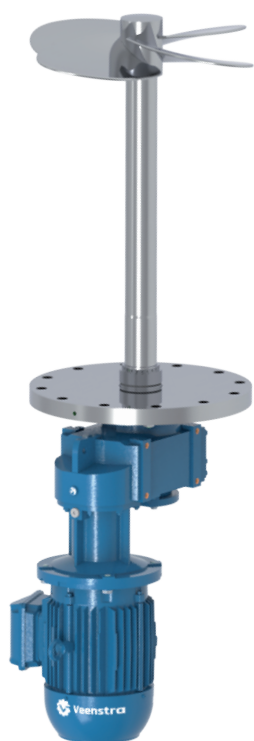


Bottom Entry Agitators | Vol. 5.000l ≤ 15.000l

Model series BEA2

These bottom entry agitators are the best fit for applications like suspending, mixing, to disperse and emulsify liquids. This kind of agitators are useful when top entry agitators are not applicable due to insufficient installation space. The BEA-1 models are applied for agitating products like soup, sauces, yoghurt, pasta's, chemicals and waste water.



Characteristics:

- Heavier operating conditions in the mixing process
- Tank size volumes 5.000 – 15.000l
- Viscosities up to approx. 100.000cP
- Double bearing housing
- Pressure: Atmospheric, Vacuum and under pressure max. 10 bar(g)
- Temperature -20 °C to 150 °C



Motor power	0,55kW – 45kW
Mounting flange	Ø250mm
Mixing Shaft	Ø60–Ø120mm / L=200 – 1.000mm
Sealings	Double mechanical seal
Mixing elements	Pitch blade / propeller / impeller / anchor / UZ
Materials	Stainless Steel 304/316 L, Hastelloy, Duplex, Super Duplex, Titanium, Carbon Steel
Coatings	C3, C4, C5 / RAL5010, RAL1013 or customer reference
Surface quality wet parts	2B-finished or grinded until Ra < 0,8 µm, or coated with HALAR®, PTFE, PU, or rubberized
ATEX Explosion protection	Ex zone (gas) 0, 1, 2, or (dust) 20, 21, 22 and Non-Ex version Nobo certificated